

# A Revision of the Subfamily Oxyporinae in Japan (Coleoptera: Staphylinidae)

By

TAKEHIKO NAKANE and KOHEI SAWADA\*

---

With 2 Plates

---

## Key to the Genera of Oxyporinae in Japan.

1. Antennae with the distal 6 or 7 joints always depressed and their axial part broadly glabrous; labrum with a fine median line, occasionally separated into two lamellae; penis distinctly depressed and its middle part of ventral surface broadly submembranous throughout the length, orifice opened ventrally, parameres always spiniform and very short.....*Oxyporus* Fabr.
- Antennae with the distal 6 or 7 joints more or less cylindrical and entirely pubescent in general; labrum without a median line; penis subcylindrical and entirely chitinized throughout, orifice broadly opened apically, parameres styliform and very long, almost as long as penis..... *Pseudoxyporus*, gen. nov.

## Genus *Oxyporus* Fabricius

Fabricius, J. C., Syst. Entom., 1775, p. 267. - Gravenhorst, Col. Micro. Brunsv., 1802, p. 150. - Stephens, Illust. Brit. Ent. Mandib., V, 1832, p. 304-305. - Kraatz, Naturg. Ins. Deutschl. Col., II, 1858, p. 810-814. - Erichson, Gen. Spec. Staph., 1879, p. 555. - Fauvel, Fn. gallo-rhen., III, 1872, p. 214. - Ganglbauer, Käf. Mitt. Europ., II, 1895, p. 602. - Reitter, Fn. Germ. II, 1909, p. 162. - Cameron, Fn. Brit. Ind., Col. Staph., I, 1930, p. 309-310. - Scheerpeltz, Tierwelt Mitteleurop., V, 2, 1930, p. 61. - Best. Tab. eur. Käf., V, 1940, p. 30.

Generotype: *Staphylinus rufus* Linné.

## Key to the Species of *Oxyporus* in Japan.

1. Thorax with a definite, or frequently vague, transverse sulcus before the middle, again a foveoid or sulcoid lateral depression on each side behind the middle.....2
- Thorax without trace of anterior sulcus, with lateral depressions only.....7
2. Elytra black throughout as other regions of body except for the tarsi and both palpi more or less testaceous; thorax slightly transverse; elytra with conspicuous, irregularly scattered punctures on the disc; length 10-11 mm.....*niger* Sharp
- Elytra bicolorous, rarely almost black then the legs bicolorous.....3
3. Abdomen uniformly black (see also 5. var.).....4
- Abdomen bicolorous.....5

---

\* Biological Laboratory 本研究は文部省科学研究助成補助金の援助による。

The writers wish to express their hearty gratitude to Professor Dr. Teiso Esaki and Professor Dr. Keizo Yasumatsu for the kind help and encouragement, and they are also greatly indebted to Messrs. Yoshihiko Kurosawa and Kôhei Sakaguti for the loan of a lot of specimens used in this study. Further, their thanks are due to Messrs. S. Eda, S. Gotô, H. Hasegawa, M. Hayashi, M. Iga, T. Kishii, I. Kono, K. Kurosa, M. Miyatake, K. Morimoto, A. Muto, M. Ohkura, M. Ohtake, T. Okutani, S. Osawa, M. W. Sanderson, H. Torigai, S. Uéno, Y. Yamamoto, M. Yoshida, T. Yoshida and Dr. Z. Tesar for the material.

4. Elytra yellow with an oblong-subrectangular black marking on each postero-external angle, which extends along the reflexed lateral margin to the posthumeral region, and frequently infuscate along the posterior margin narrowly; antennae fuscous but often a little paler at base, the pubescent area of each joint pale yellowish brown; legs yellow except the basal half of femora, knee and apex of tibiae vaguely infuscate; length 8-13mm.....*japonicus* Sharp
- a. Elytra black with the humeral and central regions vaguely reddish ..... var. *nagayamai*, nov.
- Elytra black, each with a pale yellow oblique fascia extending from humerus to the apex of suture definitely but not attached to the latter; antennae piceous, slightly paler basally; legs with the femora and both extremities of tibiae black; length 10-13mm. ....*triangulum* Sharp
- a. The whole of legs entirely black except the tarsi being dark brown..... var. *pullus*, nov.
5. Antennae blackish brown, the 2nd and frequently 3rd joint paler; elytra reddish yellow, the scutellar region with a short triangular black patch, the postero-external black marking extending from the middle of lateral margin to the apex of suture and then apparently fused with its fellow of the opposite side; basal half of femora, knee and apex of tibiae more or less infuscate; length 10-13mm..... *parvus* Sharp
- a. The whole of tibiae completely suffused with black .....var. *nishimurai*, nov.
- b. Abdomen nearly black, except for the raised lateral margins of 3 basal segments scarcely paler.....var. *jozanus*, nov.
- Antennae and palpi reddish yellow .....6
6. Elytra reddish yellow except the extreme basal part of suture and the postero-external markings black, the latter markings extending inwards but not fused with each other, leaving a narrow interspace free; abdomen black, with 2 basal segments reddish yellow at sides; all coxae blackish; length 8-11mm.....*maculiventris* Sharp
- a. Abdomen with the lateral margins of 4 basal segments reddish yellow and this color more or less extending inwards above and beneath; all coxae uniformly yellowish .....var. *flavescens*, nov.
- Elytra with the suture blackish in full length and the postero-external markings as in *japonicus*, not extending inwards; abdomen with 3 basal segment yellow laterally; all coxae reddish yellow as other parts of legs; length 7-7.5mm .....*imitator*, sp. nov.
7. Prothorax uniformly black .....8
- Prothorax reddish or reddish brown .....10
8. Legs reddish yellow except the posterior coxae black; abdomen black with the raised lateral margins of 3 basal segments reddish yellow; antennae and elytra reddish yellow, the latter with a triangular black spot on the scutellar region and common postero-external black markings rather small; length 9-10mm .....*basicornis* Cameron
- Legs including whole coxae reddish yellow .....9
9. Abdomen black with 2 basal segments and the raised lateral margins of 3rd definitely reddish yellow; antennae and palpi reddish yellow; elytra of the same color, but the postero-external angles triangularly black and the scutellum black; length 10-11mm .....*basiventris* Jarrige
- Abdomen black with the lateral margins of 4 basal segments definitely reddish yellow; antennae, palpi and elytra reddish yellow, the last with the scutellum and suture in its full length blackish and the usual external black markings not extending inwards, though the posterior margin slightly infuscate in general; length 7-10mm .....*germanus* Sharp
10. Head and thorax clear reddish brown, but anterior margin of frons, basal margin of

- thorax and often abdominal tergites, especially the 5th and 6th, dark brown; length 7mm .....*crocatus* Fauvel
- Head entirely black; thorax clear yellowish red with the anterior part blackish; scutellum and elytra black, the latter with the humeral yellowish red marking having a semiorbicular outline on disc; antennae clear yellow, slightly darkened towards apex; abdomen with 3 proximal segments and the lateral margins of 4th entirely yellowish red; legs utterly clear yellow except the posterior coxae only black; length 7–10mm .....*rufus osawai* subsp. nov.

1. *Oxyporus niger* Sharp (Pl. I, Fig. 4)

*Oxyporus niger*, Sharp, Ann. Mag. Nat. Hist., (6) III, 1889, p. 407.

Specimens examined: 13 ex.

Localities: Mt. Tashiro (Fukushima\*), Tokura (Gumma), Kamikochi, Shimashima (Nagano), Hirayu (Gifu).

Distribution: Japan (Honshu, Kyushu).

2. *Oxyporus japonicus* Sharp (Pl. I, Figs. 2, 8a; Pl. II, Fig. 6)

*Oxyporus japonicus*, Sharp, l. c. p. 407.

Specimens examined: 87 ex.

Localities: Minami-Aizu (Fukushima), Mt. Nantai, Chuzenji, Yuzawa-toge (Tochigi), Oze, Tokura (Gumma), Shimashima, Tokugo, Mt. Kiso-Komagatake (Nagano), Kurobe (Toyama), Idani (Gifu), Eiheiiji (Fukui), Mt. Dando (Aichi), Mt. Hyonosen, Mt. Ooginosen, Kaibara (Hyogo), Mt. Miune (Mie), Mt. Daisen (Tottori), Mikawa (Wakayama); Omogo (Ehime); Mt. Sobo (Oita).

Distribution: Japan (Hokkaido, Honshu, Shikoku, Kyushu).

var. *nagayamai*, nov.

Type; ♂ Kamabusazawa, Asahida-mura, Fukushima pref., 16. VII. 1949, K. Nagayama leg. (in coll. Nat. Sci. Mus. Tokyo)

3. *Oxyporus triangulum* Sharp (Pl. I, Figs. 1, 8b)

*Oxyporus triangulum*, Sharp, l. c. p. 407.

Specimens examined: 13 ex.

Localities: Kamishihoro (Tokachi); Minami-Aizu (Fukushima), Yuzawa-toge (Tochigi), Tokura (Gumma), Kamikochi, Tokugo (Nagano).

Distribution: Japan (Hokkaido, Honshu, Kyushu).

var. *pullus*, nov.

Types: 6 ex. Tokura, Gumma pref., VII. 1951, T. Nakane leg.; 2 ex. Minami-Aizu. Fukushima pref., 16. VII. 1949, K. Nagayama leg.; 2 ex. Kamikochi, Nagano pref., 21–28. VII. 1947, S. Osawa leg.; 1 ex. Mt. Daisen, Tottori pref., VII. 1939, Y. Yano leg. (in coll. Nakane, Sawada & Nat. Sci. Mus. Tokyo)

4. *Oxyporus parvus* Sharp (Pl. I, Fig. 8d.)

*Oxyporus parvus*, Sharp, l. c. p. 408.

Specimens examined: 60 ex.

Localities: Minami-Aizu (Fukushima), Echigo (Niigata), Noziri, Kamikochi (Nagano), Mitsumine (Tokyo), Yunoyama (Mie), Kibune, Arashiyama (Kyoto), Kasuga (Nara), Sankawa (Wakayama), Hyonosen, Rokko (Hyogo), Daisen (Tottori); Nagoro (Tokushima); Mt. Hiko (Fukuoka).

Distribution: Japan (Hokkaido, Honshu, Shikoku, Kyushu).

var. *nishimurai*, nov.

\* Name given in ( ) indicating prefecture.

Types: 2 ex. Mt. Daisen, Tottori pref., VII. 1941, T. Nishimura leg.; 1 ex. Kurama, Kyoto pref., 5. V. 1955, T. Nakane leg.; 1 ex. Azoke, Kyoto, 9. VII. 1949, T. Kishii leg. (in coll. Sakaguti & Nakane)

var. *jozanus*, nov.

Type: 1 ex. Jozankei, near Sapporo, Hokkaido, 1. VIII. 1943. (in coll. Nakane)

5. *Oxyporus maculiventris* Sharp (Pl. I, Figs. 3, 8c)

*Oxyporus maculiventris*, Sharp, l. c. p. 408.

Specimens examined: 12 ex.

Localities: Minami-Aizu (Fukushima), Togakushi, Kamikochi (Nagano), Kurama, Azoke (Kyoto).

Distribution: Japan (Honshu).

var. *flavesceñs*, nov.

Type: 1 ex. Tokugo-toge, near Kamikochi, Nagano pref., 27. VII. 1950, T. Nakane leg. (in coll. Nakane)

6. *Oxyporus imitator*, sp. nov.

This new species is allied closely to minor form of *O. japonicus* Sharp and *O. germanus* Sharp in build and color, but differing in the following points:

From *germanus* – Thorax bearing a vague transverse depression just before the middle; abdomen with only 3 basal segments reddish yellow at sides;

From *japonicus* – Both palpi, antennae, legs including coxae and the lateral margins of 3 proximal segments of abdomen reddish yellow.

Length: 7–8 mm.

Holotype: ♂ Arashiyama, Kyoto, 18. X 1950, T. Kishii. leg.

Paratypes: 2 ex. Yunoyama, Mie pref., 21. V. 1944, S. Osawa leg. (in coll. Nakane)

7. *Oxyporus basicornis* Cameron (Pl. I, Fig. 8f)

*Oxyporus lewisi* var. *basicornis*, Cameron, Ent. Monthly Mag., LXVI, 1930, p. 184.

Specimens examined: 32 ex.

Localities: Minami-Aizu (Fukushima), Chuzenji (Tochigi), Nebazawa (Gumma), Kamikochi, Tokugo (Nagano), Asahiarai (Aichi), Ohsugi, Hirakura (Mie), Hira (Shiga); Nagoro (Tokushima), Fukuchiyama (Fukuoka), Sata (Kagoshima).

Distribution: Japan (Honshu, Shikoku, Kyushu).

8. *Oxyporus basiventris* Jarrige (Pl. I, Figs. 5, 8e)

*Oxyporus basiventris*, Jarrige, Notes Ent. chin., XII, 1948, p. 40.

Specimens examined: 20 ex.

Localities: Yachi (Aomori), Minami-Aizu (Fukushima), Yuzawa-toge (Tochigi), Shimashima (Nagano), Nenohara (Gifu), Hirakura (Mie), Omine (Nara); Joju (Ehime).

Distribution: Japan (Honshu, Shikoku).

9. *Oxyporus germanus* Sharp (Pl. I, Fig. 8g)

*Oxyporus germanus*, Sharp, l. c. p. 409.

Specimens examined: 49 ex.

Localities: Kamikochi (Nagano), Nenoue (Gifu), Jokoji, Asahiarai (Aichi), Yunoyama (Mie), Kyoto (Kyoto), Kasuga (Nara), Senriyama (Osaka), Rokko, Mikage (Hyogo).

Distribution: Japan (Honshu).

10. *Oxyporus lewisi* Cameron

*Oxyporus lewisi*, Cameron, l. c. p. 184

It appears to us to be identical with the preceding species, but we cannot confirm

our supposition at present.

11. *Oxyporus crocatus* Fauvel

*Oxyporus crocatus*, Fauvel, Rev.d' Ent., XX, 1907, p. 204.

The original description would be based on immature individuals and the species may probably belong to *O. germanus* Sharp.

12. *Oxyporus leploceus* Jarrige

*Oxyporus leploceus*, Jarrige, Notes Entom. chin., XII, 1948, p. 39

Probably conspecific with *O. parvus* Sharp. We cannot find in the description any distinctive character to separate them.

13. *Oxyporus rufus* Linné subsp. *osawai*, nov. (Pl. I, Fig. 8h)

This new subspecies is closely allied to European *rufus* Linné, and only differs from it in the following aspects.

♂. Antennae being longer, head less transverse, larger, more distinctly convex above, mandibles robuster, and more distinctly produced distally, with the apical part more conspicuously declivous; thorax a little more broad, with the anterior region more or less suffused with black; elytra narrower, more strongly convex above, with the humeral reddish marking relatively small, and the disc bearing more fine and rather dense punctures; abdomen with the 4th to 6th segments uniformly black except the lateral margins of 4th, the 3rd often slightly infuscate in the middle; legs with the posterior coxae being black, others entirely clear reddish yellow.

Length: ♂ 10-11mm, ♀ 8mm.

Holotype: ♂ Mt. Kiso-Komagatake, Nagano Pref., 4-5. VIII. 1946, S. Osawa leg.

Allotype: ♀ Shigarū, Hyogo pref., 2. VIII. 1954, Y. Yamamoto leg. (in coll. Nakane)

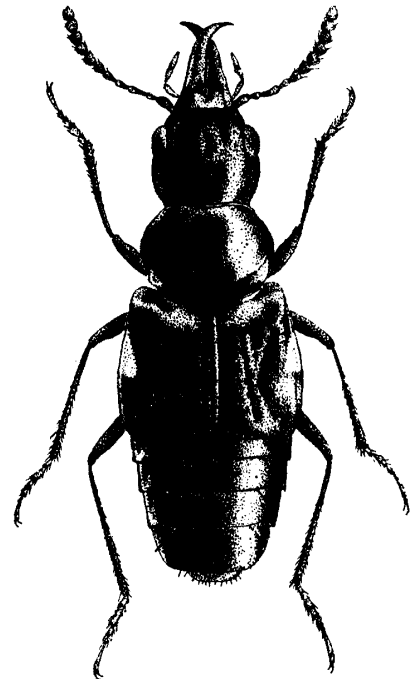
Paratypes: 1 ex. Serio, Kyoto, 2. VII. 1949, T. Kishii leg. (in coll. Nakane), 1 ex. Nagaino, Ohnuma, Fukushima pref., 24. VI. 1949, Y. Kurosawa leg., 1 ex. Karuisawa, Nagano pref., 8. VIII. 1949, R. Ishikawa leg. (in coll. Nat. Sci. Mus. Tokyo)

*Pseudoxyporus*, gen. nov.

The species included in the present genus appear to be greatly allied to the species of *Oxyporus* Fabr. in facies, nevertheless the characteristics described below may be sufficient to separate the new genus from the old genus *Oxyporus*.

Characteristics of *Oxyporus* except the following:

Frons with a median fovea or suboblong foveoid impression which is always more or less perceptible, and on each side of this with a short sulcoid or oblong foveoid depression which is rather evidently set, the intervals being convex. Labrum always having no median line to separate into two subtriangular lamellae. Antennae always elongate and slender, each joint of rather cylindrical or subcylindrical form and normally, closely pubescent throughout, that is neither broadly glabrous nor coriaceous as in *Oxyporus*, but rarely with an obscurely smoothed median line on 6 or 7 distal joints. Mentum common trapezoid form and the surface uniformly, completely chitinized without submembranous region on each side. Near the posterior thoracic angles of male generally every degree of protuberance or callosity is found.



*Pseudoxyporus hoplites* (Sharp)

The genital organ of male with entirely cylindrical and uniformly chitinized penis which is neither deflexed distally nor depressed dorso-ventrally, the median orifice always broadly opened apically, not ventrally as in *Oxyporus*, the parameres distinctly produced, entirely styliform and almost as long as the penis.

Generotype: *Oxyporus hoplites* Sharp.

*Key to the Species of Pseudoxyporus in Japan.*

1. Thorax with a vague transverse sulcus anteriorly and with or without lateral depressions posteriorly.....2
  - Thorax without trace of anterior depression..... 5
2. Thorax with an anterior sulcus, again with lateral depressions; mandibles edentate in both sexes..... 3
  - Thorax with an anterior sulcus only; mandibles dentate in male..... 4
3. Mid- and procoxae and antennae yellowish, the latter with the proximal joints lightly infuscate; elytra blackish with large oblong reddish yellow markings from humerus to the posterior one-third, length 10mm..... *humeralis* (Sharp)
  - All coxae and antennae blackish, the latter with the proximal joints and the apical half of 11th slightly paler; elytra reddish yellow with large triangular black markings on postero-external angles, which are fully extending from the posterior one-third of lateral margin to the apex of suture and scarcely meeting its fellow of the opposite side; head, thorax and abdomen entirely black; length 8-10 mm ..... *sakagutii*, sp. nov.
    - a. Femora entirely black, antennae and maxillary palpi infuscate...var. *nigrofemoralis*, nov.
4. Antennae, palpi, labrum and legs reddish: thorax also uniformly reddish, and the abdomen black with 3 basal segments and lateral margins of 4th reddish; elytra reddish with triangular or rectangular black markings posteriorly; length 9-10mm..... *longipes* (Sharp)
  - a. Thorax black; black markings of elytra triangular; the rest as above ..... var. *narumii*, nov.
  - b. Thorax and abdomen entirely black; elytra vary in color, often reddish yellow area reduced to the humeral region .....var. *kurosawai*, nov.
5. Thorax with a vague obliquely transverse depression on each side just before the obtuse basal callosity; legs black or dark brown, except the tarsi reddish .....6
  - Thorax without a transverse depression before the base, often with lateral spinose projections before the base; legs principally yellowish, rarely black..... 7
6. Elytra reddish yellow, with a large circular black spot on the center of disc and usual external black markings which are not extending inwards to the suture; head, thorax and abdomen black; mandibles edentate in male; length 10-11 mm ..... *gnatho* (Sharp)
  - Elytra blackish, each with a humeral yellowish spot and a lateral; head, thorax and abdomen black; right mandible of male with a robust tooth on the ventral inner margin; thorax with a more or less ear-like callosity near posterior angle in male, less modified in female; length 8.5-9mm .....*hoplites* (Sharp)
7. Thorax broader than long, black but occasionally with a yellow spot on each lateral face, sides evenly arched or bearing a spinose projection in front of hind angle; antennae with the 3rd joint slightly longer than 2nd; mandibles brown to dark brown, distally slightly paler; head subrectangular, slightly transverse; elytra black with a yellow spot on each humerus and sometimes a postero-internal one; abdomen black, often side margin of 2 or 3 basal segments yellowish; legs yellow; length 6.5-8 mm.....*biguttatus* (Sharp)
  - a. Thorax reddish, more or less maculate with black; elytra variable in color; abdo-

- men yellowish, with 5th and 6th segments and disc of basal 4 more or less blackish.  
 ..... var. *varicolor*, nov.
- b. Thorax uniformly yellowish red; abdomen reddish, with 5th and 6th segments and upper disc of 4th blackish..... var. *aizuanus*, nov.
- c. Legs including coxae black except for the tarsi reddish; head, thorax and abdomen entirely black; elytra black, each with a humeral stripe and a quadrate postero-internal patch reddish yellow..... subsp. *yanoi*, nov.
- Thorax longer than broad; antennae with the 3rd joint fully a half longer than 2nd; mandibles yellowish with their inner margin narrowly infusate; head oblong-ovate; elytra black, each with a small humeral yellow spot and an additional smaller one at middle of lateral margin; abdomen entirely black; legs very slender, yellow with hind coxae and apex of femora blackish; length 8mm ..... *angusticeps* (Bernhauer)

1. *Pseudoxyporus humeralis* (Sharp) (Pl. II, Figs. 1, 8a)

*Oxyporus humeralis*, Sharp, Ann. Mag. Nat. Hist., (6) III, 1889, p. 410.

Specimens examined: 6 ex.

Localities: Fujimi-toge, Tokura (Gumma), Tokugo (Nagano), Idani (Gifu).

Distribution: Japan (Honshu).

2. *Pseudoxyporus sakagutii*, sp. nov. (Pl. II, Figs. 2, 8b)

♂. Reddish yellow, head, mandibles, thorax, abdomen and postero-external angles of elytra black, antennae towards apex, coxae, trochanters, knee, apex of tibiae and often limited area of scutellar part more or less infusate.

Body robust, rather deplanate above. Head subdepressed above, slightly transverse, median fovea of frons being small but distinct, eyes moderate, gently prominent, post-ocular space gently rounded, fully a half as long as eyes, mandibles long, usually nearly as long as head, the left one with the inner margin minutely crenulate, leaving the distal one-third unmodified. Antennae long and slender, the 1st joint robust, slightly longer than 3rd, 2nd slightly longer than broad, 3rd rather short and robust, 4th distinctly dilated towards apex but as broad as 3rd, the penultimate one a half as broad as long. Thorax widest at anterior one-fourth, slightly narrower than head and slightly broader than long, sides abruptly converging backwards almost linearly, the lateral depressions behind middle deep. Elytra dilated posteriorly, sparsely but rather serially punctured, each with a definite triangular black external marking, extending from the posterior one-third of lateral margin to apex of suture; legs slender, tibiae feebly dilated distally, tarsi elongate.

♀. Head smaller, nearly as broad as thorax, which is slightly transverser, mandibles distinctly shorter but robust; legs slenderer, the tibiae not dilated towards apex at all.

Length: 8-10mm.

Holo-(♂), allo-(♀) and paratypes: 10 ex. Kurama, Kyoto, 5. V. 1955, T. Nakane leg. (in coll. Nakane & Sawada); 1 paratype: Hiei, Kyoto, 29. IV. 1940, T. Okada leg. (in coll. Sakaguti)

var. *nigrofemoralis*, nov.

Type: 1 ♂ Mt. Daisen, Tottori pref., 24. VII. 1939, Y. Yano leg. (in coll. Sakaguti)

3. *Pseudoxyporus longipes* (Sharp) (Pl. II, Figs. 7, 8c)

*Oxyporus longipes*, Sharp, l. c. p. 409.

Specimens examined: 4 ex.

Localities: Aoni (Aomori), Yunohana (Fukushima).

Distribution: Japan (Honshu).

var. *narumii*, nov.

Type: 1 ex. Yamagata-mura, Aomori pref., 7. VI. 1943, R. Narumi leg. (in coll. Nat. Sci. Mus. Tokyo)

var. *kurosawai*, nov. (Pl. II, Figs. 3, 8d)

Types: 7 ex. Yunohana, Minami-Aizu, Fukushima pref., 15. VI. 1947, Y. Kurosawa leg. (in coll. Nat. Sci. Mus. Tokyo, Nakane & Sawada); 1 ex. Tokugo, near Kamikochi, Nagano pref., 24. VII. 1951, T. Nakane leg.; 1 ex. Idani, Hida, Gifu pref., 12. V. 1954, H. Torigai leg. (in coll. Nakane)

4. *Pseudoxyporus gnatho* (Sharp)

*Oxyporus gnatho*, Sharp, l. c. p. 411.

Specimens examined: 3 ex.

Localities: Minami-Aizu (Fukushima); Omogo (Ehime).

Distribution: Japan (Hoshu, Shikoku).

5. *Pseudoxyporus hoplites* (Sharp) (Text-fig. ; Pl. II, Fig. 4.)

*Oxyporus hoplites*, Sharp, l. c. p. 410.

Specimens examined: 16 ex.

Localities: Oze (Fukushima), Kamikochi, Tokugo, Kiso-Komagatake (Nagano).

Distribution: Japan (Honshu).

6. *Pseudoxyporus biguttatus* (Sharp) (Pl. II, Figs. 5, 8e)

*Oxyporus biguttatus*, Sharp, l. c. p. 411.

Specimens examined: 7 ex.

Localities: Kamikochi, Kiso-Fukushima (Nagano), Mt. Ohdaigahara (Nara).

Distribution: Japan (Honshu).

var. *varicolor*, nov. (Pl. II, Figs. 8f, g)

Types: 4 ex. Kamikochi, Nagano pref., VII. 1947 & VI-VII. 1951, T. Nakane & S. Osawa leg. (in coll. Nakane & Sawada)

var. *aizuanus*, nov.

Type: 1 ♂ Kamabusazawa, Asahida-mura, Minami-Aizu, Fukushima pref., 16. VII. 1949, K. Nagayama leg. (in coll. Nat. Sci. Mus. Tokyo)

subsp. *yanoi*, nov.

Type: 1 ♂ Omogokei, Ehime pref., Shikoku, 6. VI. 1952, T. Yano leg.

Distribution: Japan (Shikoku). (in coll. Ent. Lab. Ehime Univ.)

7. *Pseudoxyporus angusticeps* (Bernhauer) (Pl. II, Fig. 8h)

*Oxyporus angusticeps*, Bernhauer, Entom. Nachrbl., XII, 1, 1938, p. 33.

Specimen examined: 1 ex. Mt. Ohtaki near Kamikochi (Nagano).

Distribution: China and Japan (Honshu).

### Literature cited

- Adachi, T. 1939. New Staphylinidae from Formosa. Kontyû, XIII, p. 165.  
 Bernhauer, M. 1938. Zur Staphylinidenfauna von China und Japan (9. Beitrag). Ent. Nachrbl., XII, p. 33.  
 Bernhauer, M. & K. Schubert, 1910. Coleopterorum Catalogus, pars 19. Staphylinidae I, pp. 148-150.  
 Blackwelder, R. 1952. The generic names of the beetle family Staphylinidae. U. S. Nat. Mus. Bull., 200, p. 282.



- Cameron, M. 1930. New species of Staphylinidae from Japan. Ent. Monthly Mag., LXXI, p. 184.
- 1930. The fauna of British India including Ceylon and Burma. Coleoptera Staphylinidae I, pp. 308-314.
- Fauvel, A. 1901. Staphylinides nouveaux du Japon. Revue d'Ent., XX, p. 2.
- Ganglbauer, L. 1895. Die Käfer von Mitteleuropa. Bd. II. Staphylinidae, Pselaphidae. pp. 602-605.
- Jarrige, J. 1948. Staphylinides nouveaux d'Asie orientale. Notes Ent. chin., XII, pp. 39-40.
- Kraatz, G. 1858. Naturgeschichte der Insekten Deutschlands. Coleoptera. Bd. II, p. 810-814.
- 1879. Neue Käfer vom Amur. Deutsche Ent. Zeitschr., XXIII, p. 122, t. 2, f. 3.
- Scheerpeltz, O. 1933-34. Coleopterorum Catalogus, pars. 129. Staphylinidae II, pp. 1139-1141.
- 1930. Die Tierwelt Mitteleuropas. Insekten II. Coleoptera, p. 61.
- 1940. Bestimmungstabellen europäischer Käfer (5. Stück) Fam. Staphylinidae. Bestimmungstabelle der in der paläarktischen Region durch Arten vertretenen Gattungen. Buch-Beigabe zur Kol. Rundsch., p. 30.
- Scheerpeltz, O. & K. Höfler, 1948. Käfer und Pilze. pp. 154-156.
- Sharp, D. 1889. The Staphylinidae from Japan. Ann. Mag. Nat. Hist., (6) III, pp. 406-411.
- Stephens, J. F. 1832. Illustrations of British Entomology. Mandibulata V. pp. 304-305.
- Takeuchi, S. 1941. Some considerations to the genus *Oxyporus* found in north east region of Honshyu. Ent. World, IX, 85, pp. 147-152.

#### EXPLANATION OF PLATE I

- Figs. 1-7. Male genitalia of *Oxyporus*.  
a. ventral aspect; b. lateral aspect.
- Fig. 1. *Oxyporus triangulum* Sharp
- Fig. 2. *O. japonicus* Sharp
- Fig. 3. *O. maculiventris* Sharp
- Fig. 4. *O. niger* Sharp
- Fig. 5. *O. basiventris* Jarrige
- Fig. 6. *O. rufus* Linné (Europe)
- Fig. 7. *O. maxillosus* Fabricius (Europe)
- Fig. 8. Elytral patterns of *Oxyporus*.  
a. *Oxyporus japonicus* Sharp  
b. *O. triangulum* Sharp  
c. *O. maculiventris* Sharp  
d. *O. parvus* Sharp  
e. *O. basiventris* Jarrige  
f. *O. basicornis* Cameron  
g. *O. germanus* Sharp  
h. *O. rufus osawai* subsp. nov.

#### EXPLANATION OF PLATE II

- Figs. 1-5. Male genitalia of *Pseudoxyporus*.  
a. ventral aspect; b. lateral aspect.
- Fig. 1. *Pseudoxyporus humeralis* (Sharp)
- Fig. 2. *P. sakagutii* sp. nov.
- Fig. 3. *P. longipes* (Sharp)  
var. *kurosawai*, nov.
- Fig. 4. *P. hoplites* (Sharp)
- Fig. 5. *P. biguttatus* (Sharp)
- Figs. 6-7. Mentum.
- Fig. 6. *Oxyporus japonicus* Sharp
- Fig. 7. *Pseudoxyporus longipes* (Sharp)
- Fig. 8. Elytral patterns of *Pseudoxyporus*.  
a. *Pseudoxyporus humeralis* (Sharp)  
b. *P. sakagutii*, sp. nov.  
c. *P. longipes* (Sharp)  
d. *P. longipes* (Sharp)  
var. *kurosawai*, nov.  
e. *P. biguttatus* (Sharp)  
f, g. *P. biguttatus* (Sharp)  
var. *varicolor*, nov.  
h. *P. angusticeps* (Bernhauer)
- (Received September, 1955)

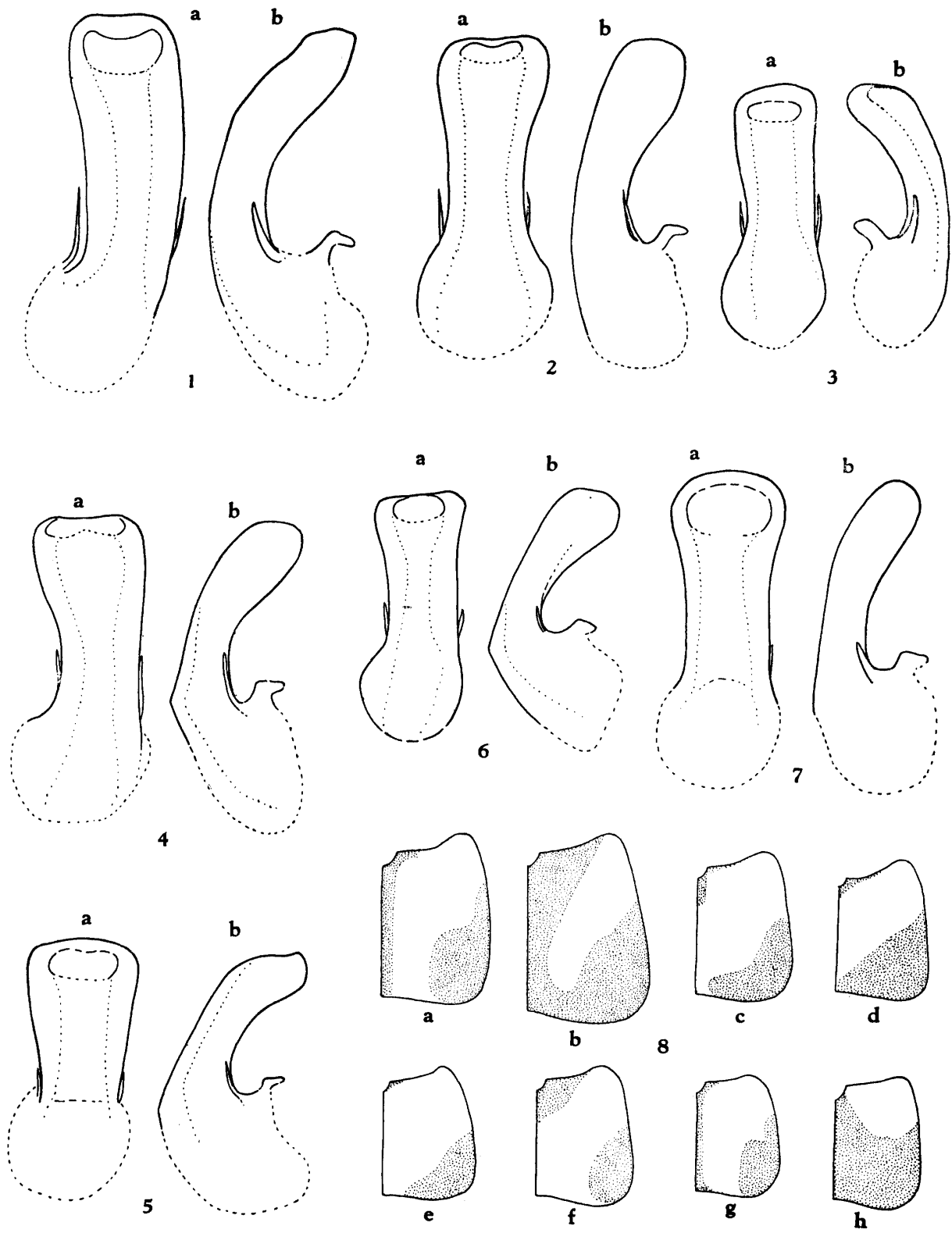


Plate I.

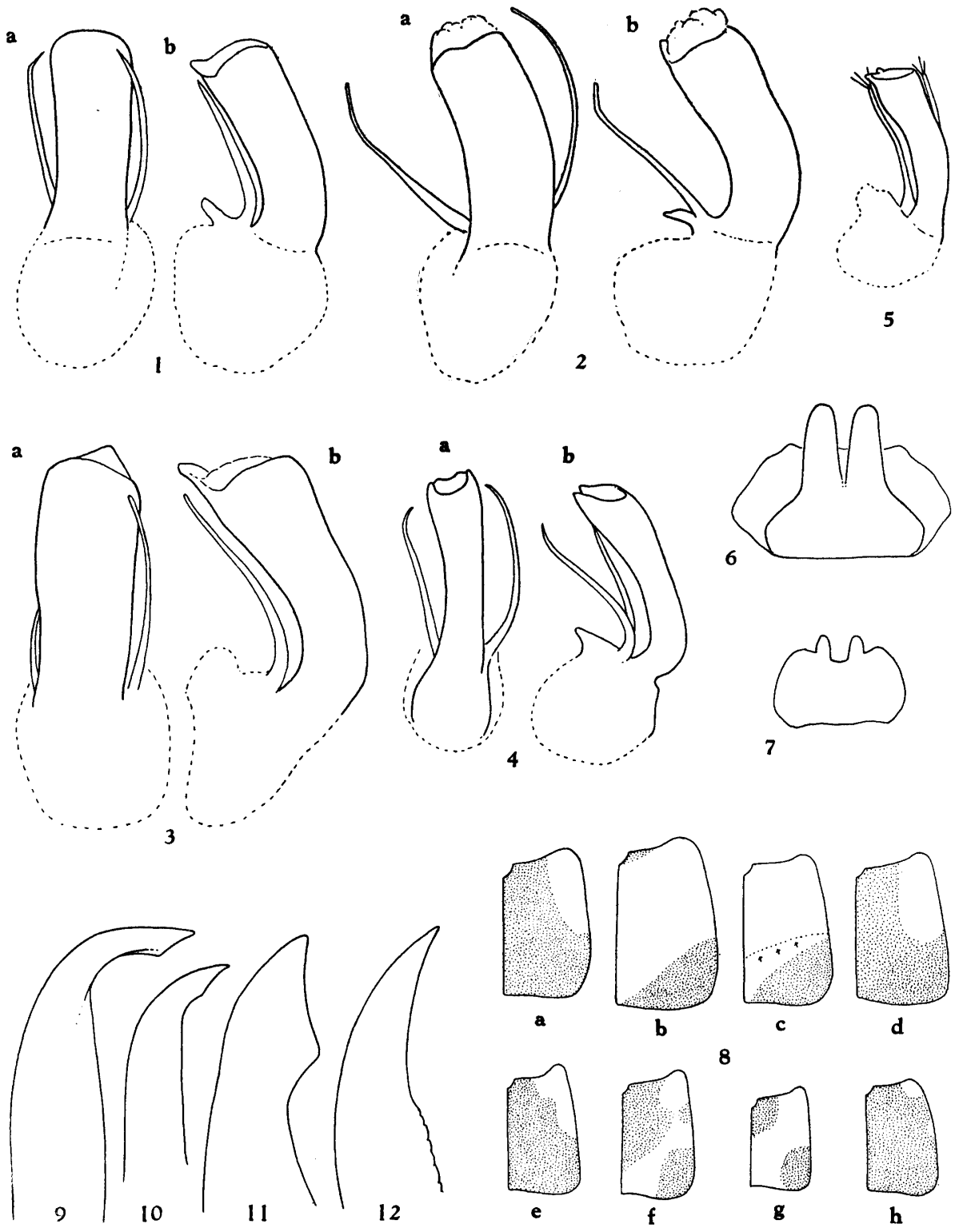


Plate II.